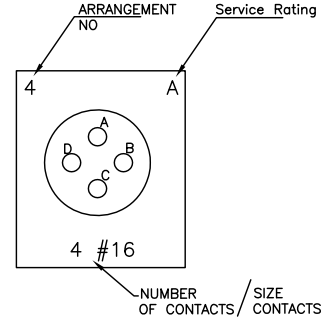




INSERT ARRANGEMENTS

Lettering is as Viewed From the Engaging Face of a Pin Insert.
 Socket Inserts will be Lettered Opposite

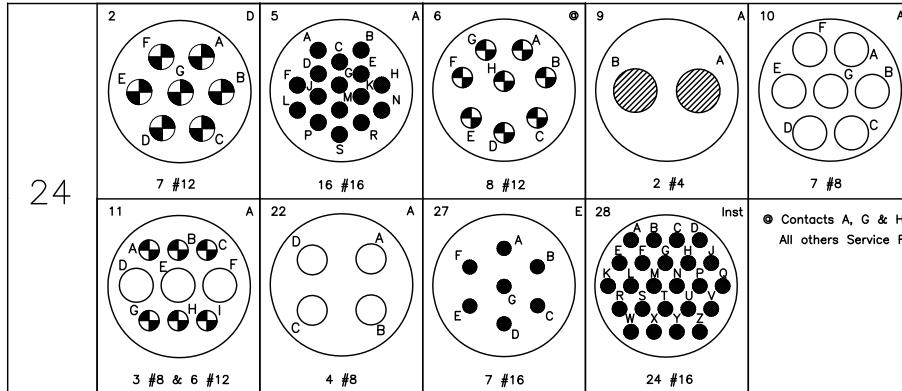
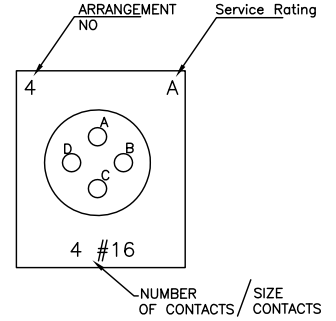


10S	2 A 1 #16
10SL	3 #16 Inst 4 A 2 #16
14S	1 A 3 #16 2 Inst 4 A 4 #16 3 Inst 5 A 5 #16 4 Inst 6 A 6 #16 5 Inst 7 A 7 #16
16S	1 A 7 #16 4 D 2 #16 5 A 3 #16 8 A 5 #16
16	10 A 3 #12 11 A 2 #12 13 A 2 #12
18	1 A 10 #16 10 A 4 #12 11 A 5 #12 12 A 6 #16 19 A 10 #16
* Contacts B, C, F & G Service Rating A All others Service Rating Inst	
20	3 D 3 #12 4 D 4 #12 7 A 8 #16 11 Inst 13 #16 15 A 7 #12 16 A 2 #12 & 7 #16 18 A 3 #12 & 6 #16 19 A 3 #8
	22 A 3 #8 & 3 #16 23 A 2 #8 25 Inst 13 #16 27 A 14 #16 29 A 17 #16 30 Inst 13 #16 33 A 11 #16
~ Contacts A, B, G & H Service Rating D All others Service Rating A	
22	2 D 3 #8 14 A 19 #16 18 A 8 #16 19 A 14 #16 20 A 9 #16
	22 A 4 #8 23 A 8 #12 28 A 7 #12 33 A 7 #16 36 A 8 #12
& Contacts C, D & E Service Rating A All others Service Rating D # Contact H Service Rating D All others Service Rating A + Contacts A, B, C, & D Service Rating D All others Service Rating A > Contact H Service Rating D All others Service Rating A	

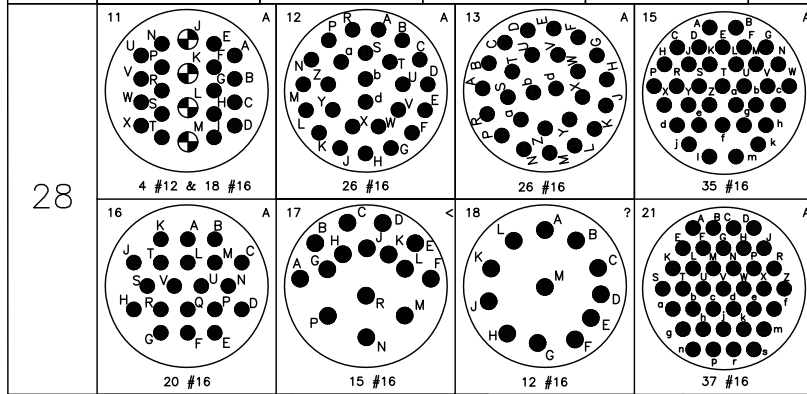


INSERT ARRANGEMENTS

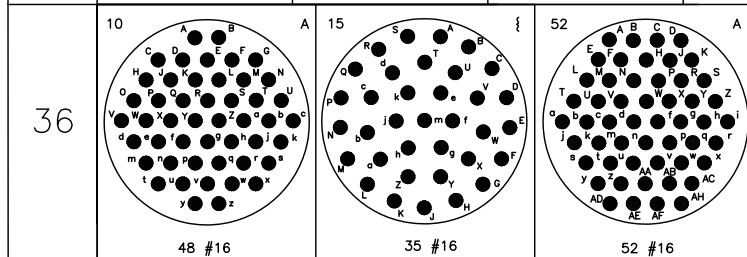
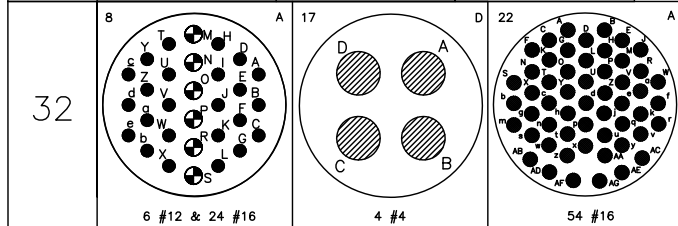
Lettering is as Viewed From the Engaging Face of a Pin Insert.
 Socket Inserts will be Lettered Opposite



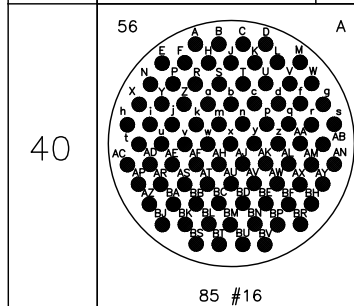
⊙ Contacts A, G & H Service Rating D
 All others Service Rating A



< Contact R Service Rating B
 Contacts M, N & P Service Rating D
 All others Service Rating A
 ? Contacts A & B Service Rating A
 Contacts C, D, E & F Service Rating Inst
 Contact M Service Rating C
 All others Service Rating D



{ Contact M Service Rating D
 All others Service Rating A



NOTE: Front Release Crimp Contacts Are Not Available in #4

