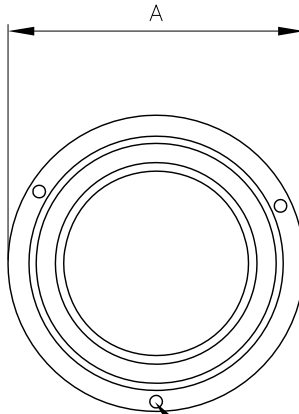
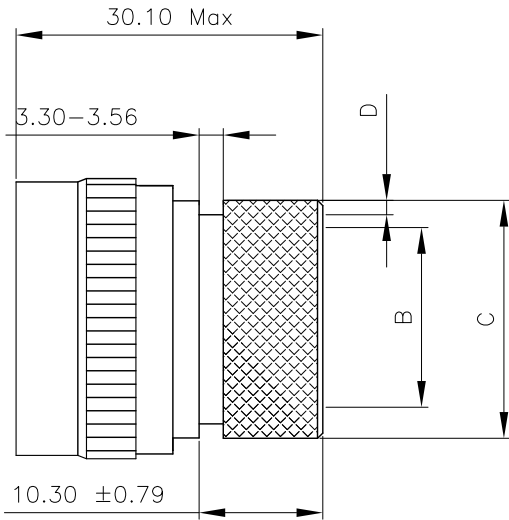


| REVISIONS LIST |       |                 |      |       |
|----------------|-------|-----------------|------|-------|
| REV            | ECO # | DESCRIPTION     | DATE | APV'D |
| A              |       | Initial Release |      |       |



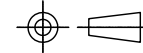
3 EQUALLY SPACED 0.51  
MAX SAFETY WIRE HOLES

| Dash Number | A             | B     | C             | D             |
|-------------|---------------|-------|---------------|---------------|
|             | 0.0/<br>-1.14 | Min   | 0.0/<br>-0.51 | +0.20<br>/0.0 |
| 8           | 15.70         | 6.40  | 13.50         | 1.10          |
| 10          | 18.60         | 9.00  | 15.40         | 1.10          |
| 12          | 21.80         | 12.50 | 19.70         | 1.10          |
| 14          | 25.00         | 14.40 | 21.30         | 1.10          |
| 16          | 28.20         | 17.50 | 24.50         | 1.10          |
| 18          | 30.90         | 19.50 | 26.50         | 1.10          |
| 20          | 34.20         | 22.70 | 30.90         | 1.80          |
| 22          | 37.30         | 25.90 | 34.40         | 1.80          |
| 24          | 40.50         | 28.80 | 36.70         | 1.80          |

| No. | Name     | Material/Finish | Remarks    |
|-----|----------|-----------------|------------|
| 1   | Shell    | Aluminum        |            |
| 2   | Fastners | Stainless Steel | Passivated |

UNLESS NOTED  
TOLERANCES ARE:  
.X ± 0.38  
.XX ± 0.25  
ANGLES ± 1°

THIRD ANGLE  
PROJECTION



1170 S. PATTON ST.  
XENIA, OHIO 45385  
PH: (937) 374-2700  
FX: (937) 374-2717

|               |                |  |                           |  |        |
|---------------|----------------|--|---------------------------|--|--------|
| UNIT: mm      | DRWN: RLM      | THESE DRAWINGS AND SPECIFICATIONS ARE THE PROPERTY OF SPI AND SHALL NOT BE COPIED, USED OR RE-PRODUCED WITHOUT PERMISSION. | TITLE                     |  |        |
| SCALE: NTS    | DATE: 12/02/20 |  | Military Back Shell       |  |        |
|               | CHK'D: TRH     |  | SPI P / N: M85049/60-1XXX |  | REV: A |
| SHEET: 1 OF 1 | APV'D: TRH     |  | CUSTOMER P / N:           |  |        |