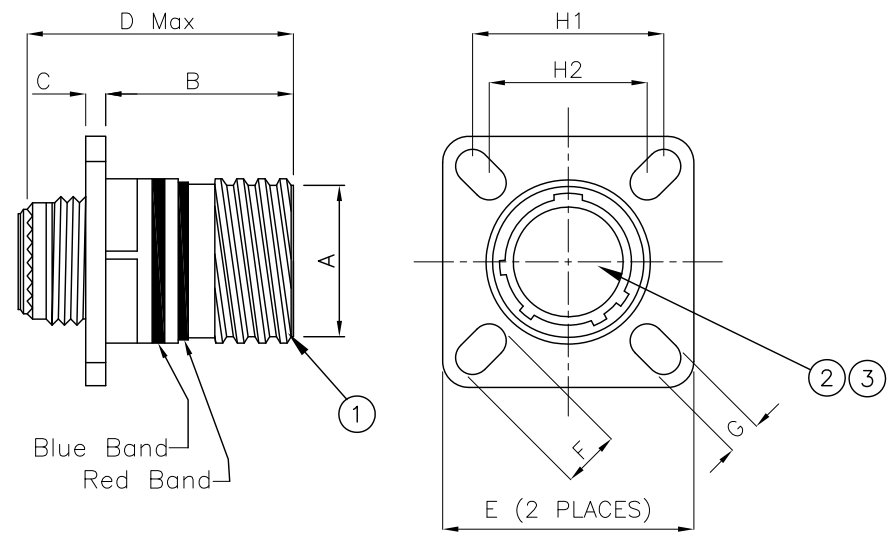


REVISIONS LIST				
REV	ECO #	DESCRIPTION	DATE	APV'D
A		Initial Release		



**SPECIFICATIONS**

<u>Mechanical</u>	
Durability	500 Cycles
Contact Retention	
20 Gauge	67 N
16 Gauge	113 N
Contact Retention	
22D Gauge	44.0 N
20 Gauge	68.0 N
16 Gauge	111.0 N
<u>Electrical</u>	
Current Rating	
22D Gauge	5.0A
20 Gauge	7.5A
16 Gauge	13.0A
Voltage Rating (@ Sea Level)	
Service Rating M	1300V
Service Rating I	1800V
Service Rating II	2000V
Insulation Resistance (@500 VDC)	>5000 MΩ
<u>Environmental</u>	
Operating Temperature	
Class C	-65°C - +200°C
Class F	-65°C - +200°C
Class W	-65°C - +175°C
Vibration (@ -65°C - +200°C)	S: 60G (@ 140 - 2000 Hz)
Shock (Peak Acceleration)	300G, 3msec

Shell Size	A MAX	B +0.00 -1.25	C MAX	D MAX	E ±0.30	F ±0.20	G ±0.20	H1 MAX	H2 MAX
A	14.14	20.83	2.50	31.50	23.80	5.49	3.25	18.26	15.09
B	17.60	20.83	2.50	31.50	26.20	4.93	3.25	20.62	18.26
C	20.77	20.83	2.50	31.50	28.60	4.93	3.25	23.01	20.62
D	23.95	20.83	2.50	31.50	31.00	4.93	3.25	24.61	23.01
E	28.30	20.83	2.50	31.50	33.30	4.93	3.25	26.97	24.61
F	29.89	20.83	2.50	31.50	36.50	4.93	3.25	29.36	26.97
G	33.07	20.07	3.20	31.50	39.70	4.93	3.25	31.75	29.36
H	34.24	20.07	3.20	31.50	42.90	6.15	3.91	34.93	31.75
J	39.42	20.07	3.20	31.50	46.00	6.15	3.91	38.10	34.93

No.	Name	Material/Finish	Remarks
1	Shell	Aluminum	
2	Insert	Thermo Plastic	
3	Contact	Copper Alloy	Ni 100µ" - Au 50µ"

UNLESS NOTED TOLERANCES ARE: .X ± 0.38 .XX ± 0.25 ANGLES ± 1°	THIRD ANGLE PROJECTION 		1170 S. PATTON ST. XENIA, OHIO 45385 PH: (937) 374-2700 FX: (937) 374-2717
UNIT: mm SCALE: NTS SHEET: 1 OF 1	DRWN: RLM DATE: 06/13/17 CHK'D: RLM APV'D: RLM	SPI P / N: SPI3820XXXXX CUSTOMER P / N:	REV: A