

REVISIONS LIST				
REV	ECO #	DESCRIPTION	DATE	APV'D
A		Initial Release		

**SPECIFICATIONS**

Mechanical

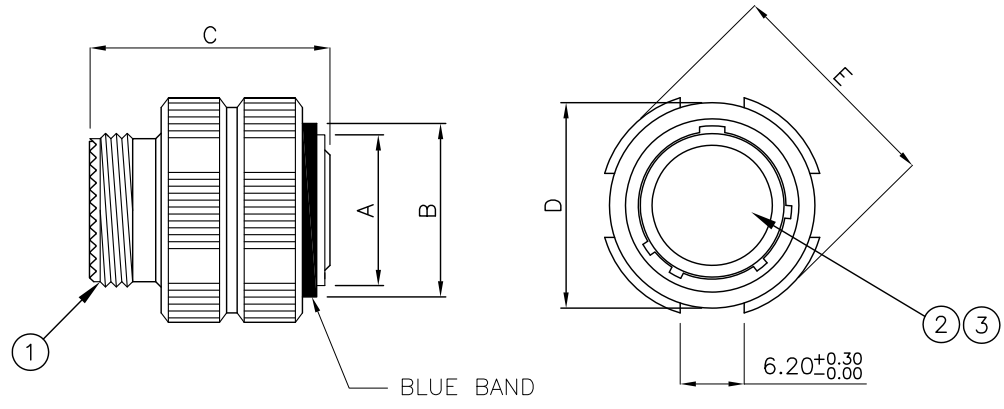
Durability	500 Cycles
Contact Retention	
20 Gauge	67 N
16 Gauge	113 N
Contact Retention	
22D Gauge	44.0 N
20 Gauge	68.0 N
16 Gauge	111.0 N

Electrical

Current Rating	
22D Gauge	5.0A
20 Gauge	7.5A
16 Gauge	13.0A
Voltage Rating (@ Sea Level)	
Service Rating M	1300V
Service Rating I	1800V
Service Rating II	2000V
Insulation Resistance (@500 VDC)	>5000 MΩ

Environmental

Operating Temperature	
Class C	-65°C - +200°C
Class F	-65°C - +200°C
Class W	-65°C - +175°C
Vibration (@ -65°C - +200°C)	S: 60G (@ 140 - 2000 Hz)
Shock (Peak Acceleration)	300G, 3msec



Shell Size	A MAX	B MAX	C MAX	D MAX	E MAX
A	11.13	18.60	31.00	19.00	21.80
B	14.38	21.30	31.00	21.90	25.00
C	17.22	25.60	31.00	26.10	29.40
D	20.40	28.90	31.00	29.30	32.50
E	23.57	32.40	31.00	32.80	35.70
F	26.24	35.10	31.00	35.50	38.50
G	29.42	38.30	31.00	38.70	41.70
H	32.59	41.30	31.00	41.70	44.90
J	35.77	44.50	31.00	44.90	48.00

No.	Name	Material/Finish	Remarks
1	Shell	Aluminum	
2	Insert	Thermo Plastic	
3	Contact	Copper Alloy	Ni 100μ" - Au 50μ"

UNLESS NOTED TOLERANCES ARE: .X ± 0.38 .XX ± 0.25 ANGLES ± 1°	THIRD ANGLE PROJECTION 	 1170 S. PATTON ST. XENIA, OHIO 45385 PH: (937) 374-2700 FX: (937) 374-2717
UNIT: mm	DRWN: RLM	<b>TITLE</b> Commercial D38999 Plug SPI P / N : SPI3826XXXXX CUSTOMER P / N :
SCALE: NTS	DATE: 06/13/17	
	CHK'D: RLM	
SHEET: 1 OF 1	APV'D: RLM	

THESE DRAWINGS AND SPECIFICATIONS ARE THE PROPERTY OF SPI AND SHALL NOT BE COPIED, USED OR RE-PRODUCED WITHOUT PERMISSION.

REV: A