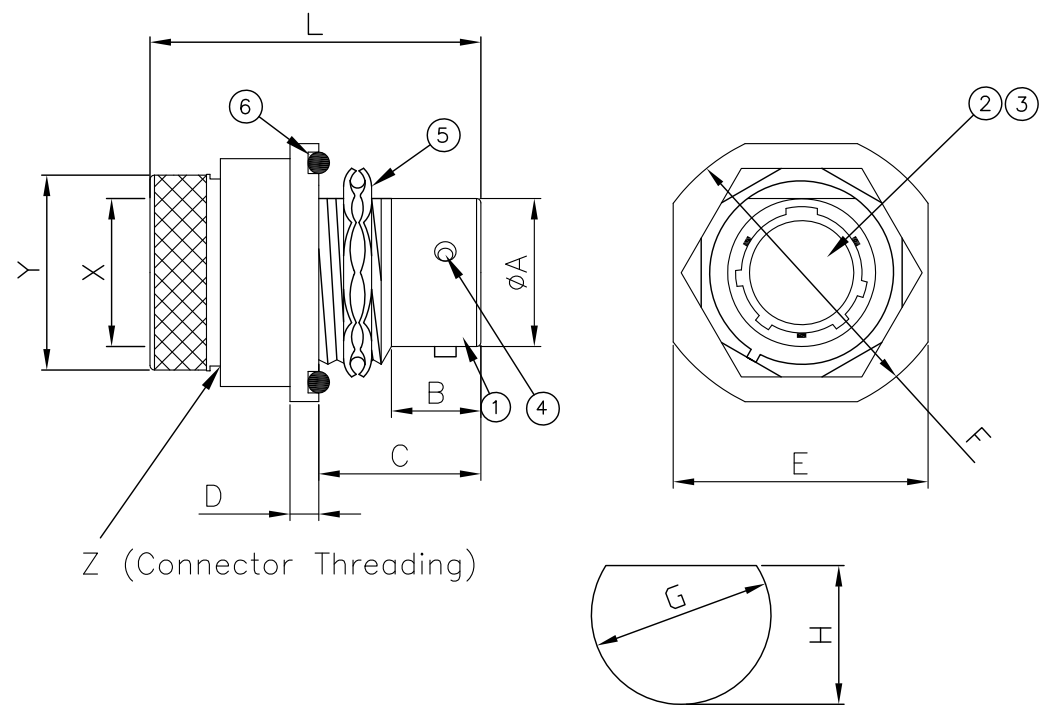


REVISIONS LIST				
REV	ECO #	DESCRIPTION	DATE	APV'D
A		Initial Release		
B		Changed Jam Nut to Alternate Configuration	08/13/15	RLM
C		Added Back Shell Dimensions & Connector Threading	09/27/21	RLM



Panel Cut Out

SPECIFICATIONS

Mechanical	
Engagement Force-Torque (Max)	.902-4.97 N-m
Disengagement Force-Torque (Min)	.113-.791 N-m
Durability	500 Cycles
Insert Retention	5.3 Kg/cm ²
Contact Retention (Min)	
20 Gauge	67 N
16 Gauge	113 N
Contact Engagement Force (Max)	
20 Gauge	5.0 N
16 Gauge	8.34 N
Contact Separation Force (Min)	
20 Gauge	.195 N
16 Gauge	.556 N
Electrical	
Current Rating (Max)	
20 Gauge	7.5A
16 Gauge	22.0A
Contact Resistance	As specified in Table VII MIL-DTL-26482
Insulation Resistance (@500 VDC (25°C))	5000 MΩ
Short Time (125°C)	3 MΩ
Long Time (105°C)	12 MΩ
Dielectric Withstanding Voltage (Working)	
SL (Service Rating I)	600 VAC (rms)
(Service Rating II)	1000 VAC (rms)
70,000 Ft (Service Rating I)	300 VAC (rms)
(Service Rating II)	450 VAC (rms)
Environmental	
Operating Temperature	-55°C - +125°C
Air Leakage (@2.11 Kg/cm ²)	<4.55X10 ⁻³ cm ³ /s
Salt Spray (@35°C)	48 Hrs
Vibration (10-2000Hz)	12 Hrs
Shock (Peak Acceleration)	490 m/s ² (50g's)

NOTE: Service Rating is identified on each insert arrangement

Shell Size	A	B	C	D	E	F	G	H	L	X	Y	Z	Panel Thickness (REF)	
	MAX	MIN	+0.79 -0.0	±0.51	MAX	+0.00 -0.81	+0.254 -0.127	+0.254 -0.127	MAX	ID MIN	OD MAX	UNEUF-2B	Min	Max
8	12.04	9.75	17.55	2.97	24.23	27.38	14.53	13.72	34.14	6.83	19.05	.625-24	1.57	3.18
10	15.01	9.75	17.55	2.97	27.38	30.56	17.70	16.89	34.14	9.12	22.23	.750-20	1.57	3.18
12	19.08	9.75	17.55	2.97	32.16	35.33	22.48	21.20	34.14	11.91	25.40	.875-20	1.57	3.18
14	22.25	9.75	17.55	2.97	35.33	38.51	25.65	24.18	34.14	14.96	28.58	1.000-20	1.57	3.18
16	25.43	9.75	17.55	2.97	38.51	41.68	28.83	27.33	34.14	18.21	31.75	1.120-18	1.57	3.18
18	28.60	9.75	17.55	2.97	41.68	44.86	32.00	30.51	34.14	19.79	34.93	1.250-18	1.57	3.18
20	31.78	11.33	22.33	3.76	46.43	49.63	35.18	33.69	40.49	22.89	38.89	1.375-18	1.57	6.35
22	34.95	11.33	22.33	3.76	49.63	52.78	38.35	36.86	40.94	25.63	42.06	1.500-18	1.57	6.35
24	38.12	12.17	23.16	3.76	52.78	55.96	41.53	40.03	41.68	28.52	45.24	1.625-18	1.57	6.35

No.	Name	Material/Finish	Remarks
1	Shell	Aluminum	
2	Insert	Neoprene	
3	Contact	Copper Alloy	Ni 100µ" - Au 50µ"
4	Locking Post	304 Stainless Steel	
5	Jam Nut	Aluminum	
6	Gasket Ring	Neoprene	

UNLESS NOTED TOLERANCES ARE: .X ± 0.38 .XX ± 0.25 ANGLES ± 1°	THIRD ANGLE PROJECTION 	 1170 S. PATTON ST. XENIA, OHIO 45385 PH: (937) 374-2700 FX: (937) 374-2717
UNIT: mm	DRWN: RLM	TITLE MIL-DTL-26482 Jam Nut Receptacle SPI P / N : MS3114EXX-XXXX REV : C CUSTOMER P / N :
SCALE: NTS	DATE: 01/29/14	
	CHK'D: RLM	
SHEET: 1 OF 1	APV'D: RLM	