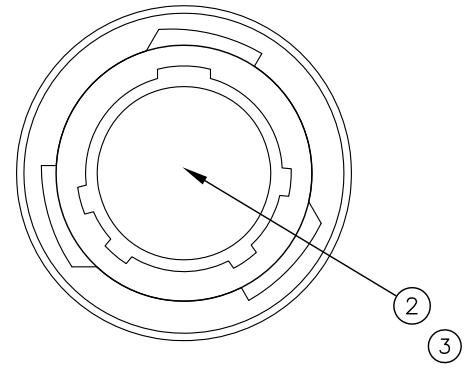
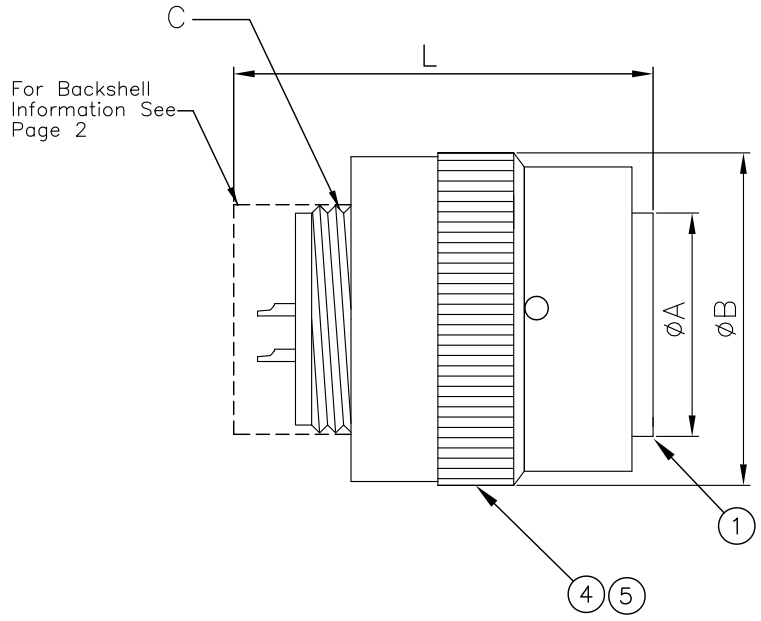


REVISIONS LIST				
REV	ECO #	DESCRIPTION	DATE	APV'D
A		Initial Release		
B		Updated Back Shell Materials	08/23/23	RLM



**SPECIFICATIONS**

Mechanical

Engagement Force-Torque (Max)	.902-4.97 N-m
Disengagement Force-Torque (Min)	.113-.791 N-m
Durability	500 Cycles
Insert Retention	5.3 Kg/cm <sup>2</sup>
Contact Retention (Min)	
20 Gauge	67 N
16 Gauge	113 N
Contact Engagement Force (Max)	
20 Gauge	5.0 N
16 Gauge	8.34 N
Contact Separation Force (Min)	
20 Gauge	.195 N
16 Gauge	.556 N

Electrical

Current Rating (Max)	
20 Gauge	7.5A
16 Gauge	22.0A
Contact Resistance	As specified in Table VII MIL-DTL-26482
Insulation Resistance (@500 VDC)	
(25°C)	5000 MΩ
Short Time (125°C)	3 MΩ
Long Time (105°C)	12 MΩ
Dielectric Withstanding Voltage (Working)	
SL (Service Rating I)	600 VAC (rms)
(Service Rating II)	1000 VAC (rms)
70,000 Ft (Service Rating I)	300 VAC (rms)
(Service Rating II)	450 VAC (rms)

Environmental

Operating Temperature	-55°C - +125°C
Air Leakage (@2.11 Kg/cm <sup>2</sup> )	<4.55X10 <sup>-3</sup> cm <sup>3</sup> /s
Salt Spray (@35°C)	48 Hrs
Vibration (10-2000Hz)	12 Hrs
Shock (Peak Acceleration)	490 m/s <sup>2</sup> (50g's)

NOTE: Service Rating is identified on each insert arrangement

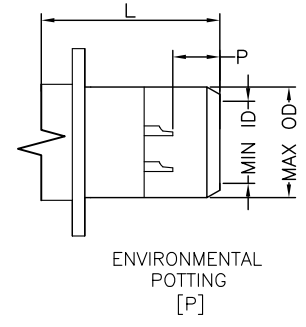
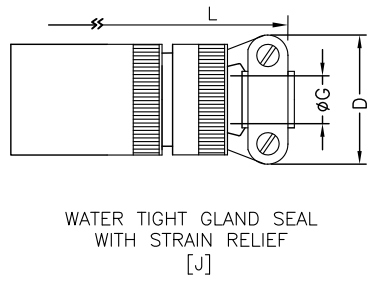
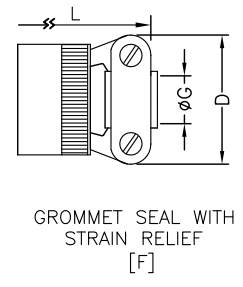
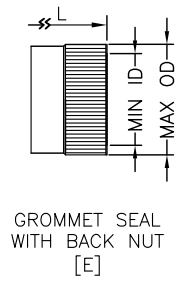
Shell Size	A Max	B MAX	C THREAD (UNEF2A)
8	9.09	19.86	.4375-28
10	12.34	23.52	.5625-24
12	15.19	26.49	.6875-24
14	18.36	30.05	.8125-20
16	21.54	33.15	.9375-20
18	24.08	35.33	1.0625-18
20	27.25	38.89	1.1875-18
22	30.43	42.06	1.3125-18
24	33.60	45.14	1.4375-18

No.	Name	Material/Finish	Remarks
1	Shell	Aluminum	
2	Insert	Neoprene	
3	Contact	Copper Alloy	Ni 100μ" - Au 50μ"
4	Coupling Nut	Aluminum	
5	Spring	Steel	

UNLESS NOTED TOLERANCES ARE: .X ± 0.38 .XX ± 0.25 ANGLES ± 1°	THIRD ANGLE PROJECTION 		1170 S. PATTON ST. XENIA, OHIO 45385 PH: (937) 374-2700 FX: (937) 374-2717
--	----------------------------	--	---

UNIT: mm	DRWN: RLM	THESE DRAWINGS AND SPECIFICATIONS ARE THE PROPERTY OF SPI AND SHALL NOT BE COPIED, USED OR RE-PRODUCED WITHOUT PERMISSION.	TITLE	
SCALE: NTS	DATE: 01/29/14		MIL-DTL-26482 Straight Plug	
	CHK'D: RLM		S P I P / N : MS3116XXX-XXXX	
SHEET: 1 OF 1	APV'D: RLM		REV: B	
		CUSTOMER P / N:		

REVISIONS LIST				
REV	ECO #	DESCRIPTION	DATE	APV'D
A		Initial Release		
B		Updated Back Shell Materials	08/23/23	RLM



GROMMET SEAL WITH BACK NUT [E]

GROMMET SEAL WITH STRAIN RELIEF [F]

WATER TIGHT GLAND SEAL WITH STRAIN RELIEF [J]

ENVIRONMENTAL POTTING [P]

Shell Size	CLASS E			CLASS F			CLASS J				CLASS P			
	L MAX	ID MIN	OD MAX	L MAX	D MAX	ØG ±.254	L MAX	D MAX	GLAND CLOSED	ØG OPEN	L MAX	ID MIN	OD MAX	P MIN
8	33.73	6.58	15.44	48.82	21.03	3.18	57.68	21.03	4.29	5.84	36.91	8.05	15.44	6.35
10	33.73	9.12	18.64	48.82	22.63	4.78	57.68	22.63	5.21	7.92	39.91	11.02	18.64	6.35
12	33.73	11.91	21.79	48.82	25.81	7.92	61.24	25.81	8.59	11.23	36.91	13.92	21.79	6.35
14	33.73	14.96	24.99	48.82	28.98	9.53	66.01	28.98	10.57	13.69	36.91	17.09	24.99	6.35
16	33.73	18.47	28.19	51.99	30.56	12.70	74.75	30.56	13.97	15.65	36.91	20.27	28.19	6.35
18	33.73	19.79	31.34	52.78	37.31	15.88	80.57	37.31	15.24	17.07	36.91	22.83	31.34	6.35
20	38.89	22.89	34.54	59.54	37.31	15.88	91.69	37.31	16.13	18.97	42.47	26.01	34.54	6.35
22	38.89	25.63	37.69	59.54	42.06	19.05	95.66	42.06	17.02	21.49	42.47	29.18	37.69	6.35
24	40.49	28.52	40.89	61.11	44.45	20.32	101.22	44.45	19.30	22.69	44.04	32.36	40.89	6.35

Name	Material/Finish	Remarks
Back Shells & Clamps	Aluminum	"P" Class is Nylon
Screws	Stainless Steel	
Washers	Stainless Steel	F & J Back Shells
Grommets/O-Rings	Neoprene	
Gland Seal	Silicone	

UNLESS NOTED TOLERANCES ARE: .X ± 0.38 .XX ± 0.25 ANGLES ± 1°	THIRD ANGLE PROJECTION 	 1170 S. PATTON ST. XENIA, OHIO 45385 PH: (937) 374-2700 FX: (937) 374-2717
UNIT: mm	DRWN: RLM	<b>TITLE</b> MIL-DTL-26482 Straight Plug S P I P / N : MS3116XXX-XXXX R E V : B C U S T O M E R P / N :
SCALE: NTS	DATE: 01/29/14	
	CHK'D: RLM	
SHEET: 2 OF 2	APV'D: RLM	