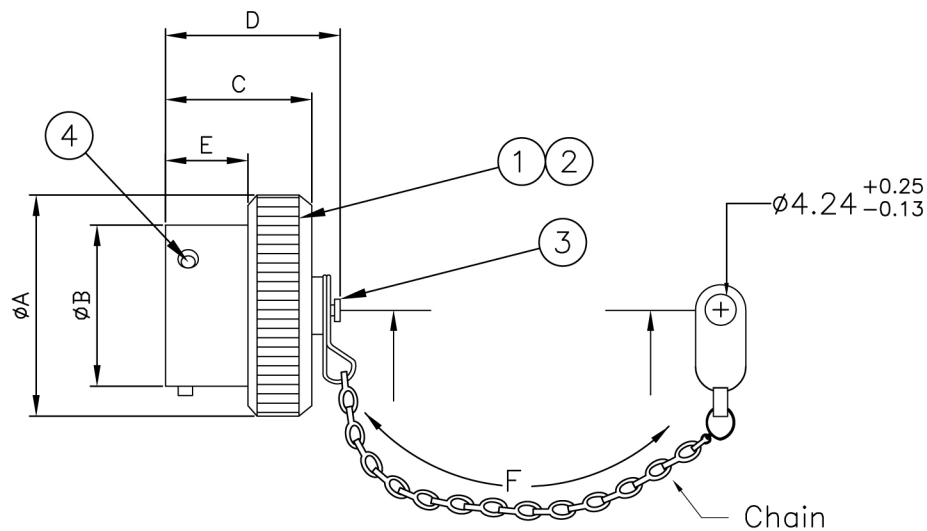
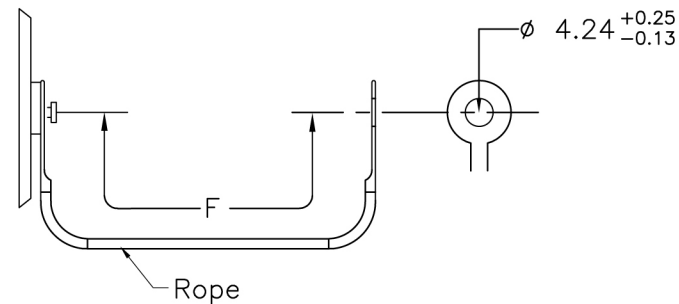


REVISIONS LIST				
REV	ECO #	DESCRIPTION	DATE	APV'D
A		Initial Release		



Attachment Option "C"

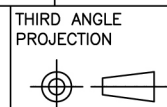


Attachment Option "R"

Shell Size	ϕA MAX	ϕB $\begin{matrix} +0.03 \\ -0.13 \end{matrix}$	C MAX	D MAX	E $\begin{matrix} +0.25 \\ -0.0 \end{matrix}$	F $\begin{matrix} +12.7 \\ -6.35 \end{matrix}$
8	18.26	12.01	14.27	19.84	9.35	76.20
10	21.44	14.99	14.27	19.84	9.35	76.20
12	25.40	19.05	14.27	19.84	9.35	88.90
14	28.58	22.22	14.27	19.84	9.35	88.90
16	31.75	25.40	14.27	19.84	9.35	88.90
18	34.92	28.58	14.27	19.84	9.35	88.90
20	38.10	31.75	15.88	21.44	10.92	101.60
22	41.28	34.92	15.88	21.44	10.92	101.60
24	44.45	38.10	16.71	22.22	11.76	101.60

No.	Name	Material/Finish	Remarks
1	Shell	Aluminum	
2	Seal	Silicone Rubber	
3	Fastener	Stainless Steel	
4	Locking Pin	Stainless Steel	
	Rope	7 Strand Stainless Steel	
	Chain	Stainless Steel	

UNLESS NOTED TOLERANCES ARE:
.X ± 0.38
.XX ± 0.25
ANGLES ± 1°



1170 S. PATTON ST.
XENIA, OHIO 45385
PH: (937) 374-2700
FX: (937) 374-2717

UNIT: mm	DRWN: RLM	THESE DRAWINGS AND SPECIFICATIONS ARE THE PROPERTY OF SPT AND SHALL NOT BE COPIED, USED OR RE-PRODUCED WITHOUT PERMISSION.	TITLE	
SCALE: NTS	DATE: 01/18/13		26482 Plug Protective Cover	
	CHK'D: TRH		S P I P / N : MS3180-XXXXX	
SHEET: 1 OF 1	APV'D: TRH		C U S T O M E R P / N : MS3180-XXXXX	
			REV: A	